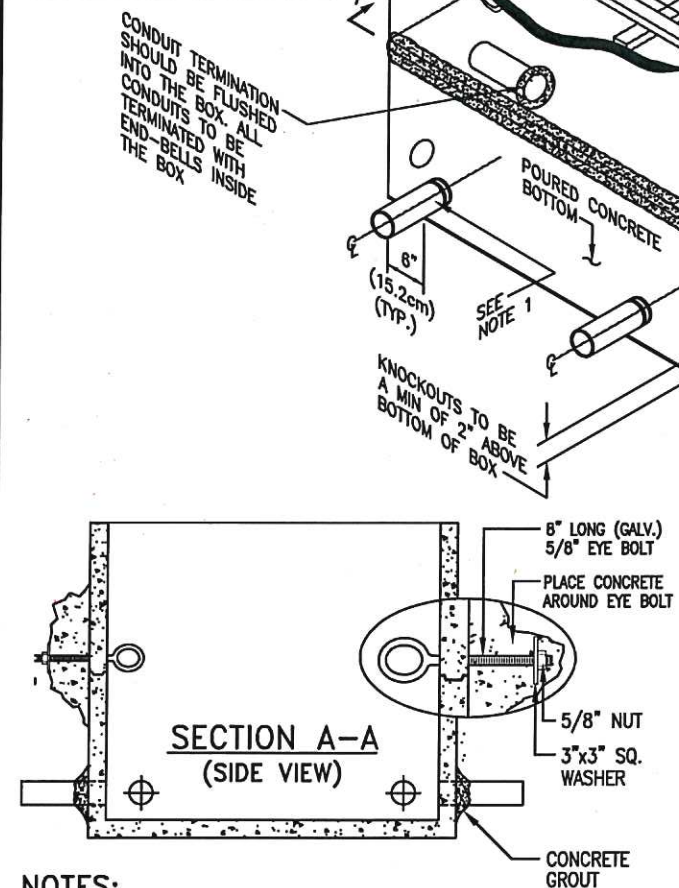


G:\ENGINEERING&OPERATION\ENGINEER DRAWINGS\WorkOrder\L_Construction Standard\Material & Inst Criteria UG Elect System\1L447.dwg

REV	DESCRIPTION	BY	DATE
1	ADDED ITEM 2	jmu	3/11/02
2	ADDED ITEM 3	jmu	5/3/02
3	ADDED COVER CATALOG #.	jmu	9/9/03
4	ADDED NOTE 4	CB	10/15/03
5	ADDED NEW 36"x60" BOX	J.U.	6/30/04
5	ADDED EYE BOLT	J.U.	4/22/05
6	UPDATED SECTION	C.B.	4/10/06
7	CHANGE CO. NAME	T.N.	11/20/08
8	UPDATED CAT NO.	T.N.	11/01/18
9	UPDATED CAT NO. FOR NEWBASIS	L.B.M.	9/29/2020



FOR INSTALLATION IN STREET OR DRIVEWAYS BOX SHALL BE TRAFFIC RATED (H20) SEE 1-L-513 & 1-L-619

FOR SECONDARY BOX ALAMEDA MUNICIPAL POWER LOGO TO BE FOR PRIMARY BOX ALAMEDA MUNICIPAL POWER AND FOR COMMUNICATION AND FOR MUNICIPAL POWER HIGH VOLTAGE ALAMEDA MUNICIPAL POWER FIBER

ALL GRIP COVER WITH 3/8"-16" UNL STAINLESS STEEL PENTA HEAD BOLTS.

EYE BOLT ASSY. TYP. (BOTH ENDS)

CONCRETE ENVELOPE AROUND BOX SEAMS

6" (TYP.) CONCRETE GROUT (TYP.)

SEE NOTE 1

CONCRETE ENVELOPE OUTSIDE THE BOX

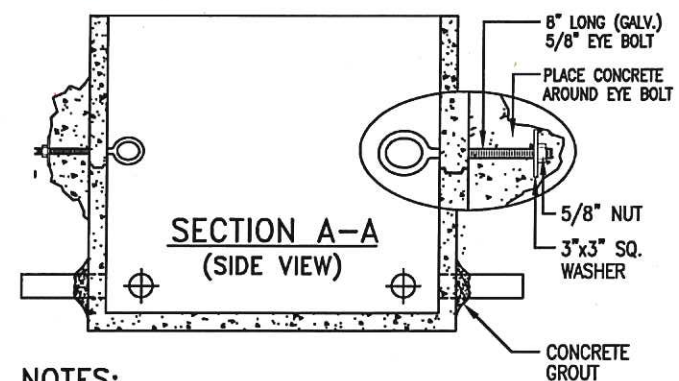
3" MIN (SEE NOTE 5)

POURED BOTTOM CONCRETE

8" (15.2cm) (TYP.)

SEE NOTE 1

CONDUIT TERMINATION SHOULD BE FLUSHED INTO THE BOX. ALL CONDUITS TO BE TERMINATED WITH END-BELLS INSIDE THE BOX



- NOTES:**
- ACTUAL NUMBER & LOCATION OF CONDUIT ENTRIES INTO THE BOX WILL BE DETERMINED IN THE FIELD BY ALAMEDA MUNICIPAL POWER (AMP) COMPLIANCE INSPECTOR.
 - CONDUIT ENTRIES INTO THE BOX SHALL BE AT BOX PERIMETERS TO MAXIMIZE BENDING RADIUS OF FUTURE CABLE INSTALLATION.
 - BOX SHALL BE INSTALLED OVER MATERIAL COMPACTED TO 90% MIN. USE TEMPORARY WOOD BRACE SUPPORT IN THE INTERIOR DURING COMPACTION.
 - BOX & COVER SHALL MEET OR EXCEED THE ANSI/SCTE 77 TIER15 OR "UL TIER 10" DESIGN & TEST LOAD REQUIREMENTS.
 - PROVIDE AT LEAST 3 FT. OF STRAIGHT CONDUIT RUNS BEFORE ANY CONDUIT BENDS IS ALLOWED

BOX SIZE	VENDOR/MFR	CATALOG No.	
		BOX	COVER
SECONDARY 17"x30"x26" (43.2x76.2x66.0)	QUAZITE	PG1730BA18 PG1730BA08	PG1730HA00E81P
	OLD CASTLE (CARSON)	1730-18 1730-08	1730-P1
17"x30"x18"	NEWBASIS	FCA173018-90010	
SECONDARY 24"x36"x36" (61x91.4x91.4)	QUAZITE	PG2436BA18 (2 EA.)	PG2436HA00E81P
	OLD CASTLE (CARSON)	2436-18 (2 EA.)	2436-P1
	NEWBASIS	FCA243636-90046	
PRIMARY/SECONDARY 30"x48"x36" (76.2x121.9x91.4)	QUAZITE	SEC PRI	PG3048BA18 (2 EA.) PG3048HA00L91P
	OLD CASTLE (CARSON)	3048-18 (2 EA.)	3048-P1 (ONE-PIECE)
	NEWBASIS	FCA304836-XXXXX	90116-SECONDARY 90117-PRIMARY
PRIMARY/SECONDARY 36"x60"x36" (91.4x152.4x91.4)	QUAZITE	SEC PRI	PG3660BA18 (2 EA.) PG3660HA00L91P
	OLD CASTLE (CARSON)	3660-18 (2 EA.)	3660-P1 (TWO PIECE)
	NEWBASIS	FCA366036-XXXXX	90064-SECONDARY 90065-PRIMARY

ALAMEDA MUNICIPAL POWER
A Department of the City of Alameda
2000 GRAND STREET, P.O. BOX H
ALAMEDA, CALIFORNIA 94501

TITLE : **POLYMER-CONCRETE PRIMARY/SECONDARY BOX DETAILS FOR SIDE WALK & PLANTER APPLICATIONS (SIDE-ENTRY)**

DRAWN : L.V. ANCHETA	DATE: SEP. 29, 2020	DWG. NO.: 1-L-447	REV. 9
REVIEWED: [Signature]		SCALE: NTS	SHT 1 OF 1
APPROVED: [Signature]			