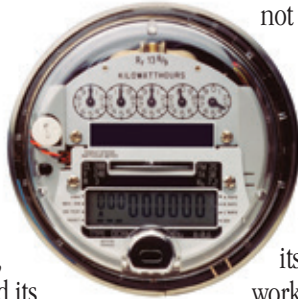




Board to Consider Electric Rates at April Meeting

At its April 21 meeting, the Public Utilities Board will consider a recommendation to increase electric rates for commercial and residential customers by an overall average of 2 percent, effective July 1, 2014. This will be the fifth year of the Board's five-year rate adjustment plan, which was designed to protect AMP and its customers from sudden rate spikes due to higher power costs, lower electricity demand and increased operating expenses.

While the proposed rate increase averages 2 percent for all customers, the percentage of the increase will vary depending on the customer's rate class. The proposed increases by rate class were



not available when *The Flash* went to print.

To learn more, visit AMP's website or come to the Board meeting on April 21 at 7 p.m. at the AMP Service Center, 2000 Grand St.

Prior to the regular Board meeting, the Public Utilities Board will gather for its annual budget workshop. The budget workshop is an opportunity for the Board to align budget priorities with the strategic priorities that were set during January's annual planning workshop. The final budget will be adopted at the Board's June 23 meeting. The budget workshop will begin at 4 p.m. at the AMP Service Center.

Materials for both meetings will be available on AMP's website on Monday, April 7. 

Alameda Seeks Artists to Transform Utility Boxes

Across the country communities have been covering utility boxes with art to beautify their downtowns. And now with the launch of "Power Box Art," the island city is gearing up to transform the ordinary into the extraordinary.

Power Box Art, a pilot project coordinated by Alameda Municipal Power, Park Street Business Association and Rhythmix Cultural Works is seeking artists who live or work in Alameda to design art for 10 AMP transformer boxes in the Park Street Business District.

Power Box Art invites artists to renew the utility transformers by creating "green" inspired designs that



energize Alameda.

The 10 artists chosen will see their designs transferred to a

special vinyl adhesive film and professionally applied to the exterior of transformer boxes. Each artist will receive a \$500 stipend and will be included in a Power Box Art show at Rhythmix-K Gallery.

The official "call to artists" will be posted on AMP's website on April 26. The deadline for submissions is June 15. The transformers will be unveiled Friday, September 12 on an "art walk" beginning at Rhythmix Cultural Works.

In the spirit of community, Power Box Art is


AMP's Medical Discount Program



To reduce the impact of higher electricity costs resulting from operating critical health maintenance equipment, AMP offers a 10 percent medical discount.

Requirements


- Service address must be the applicant's year round primary residence
- Applicant must be dependent upon a life-support device or be a paraplegic, hemiplegic, or quadriplegic, a multiple sclerosis patient or a scleroderma patient requiring additional space heating or air conditioning.
- Other medical conditions may be eligible and will be reviewed on an individual basis.
- Customers participating in the energy assistance program (EAP) are not eligible for the medical discount.
- A completed medical application must be submitted with a dated letter from the applicant's doctor (on the doctor's letterhead) stating the patient's name, disability and need for special life-support or health maintenance equipment.

To download the application form, or if you need more information, visit AMP's website or call 748-3900. 


Who Will Be Our Next General Manager?



The search is on for AMP's next general manager. AMP has hired a search firm to assist the utility in finding potential candidates from in and out of state. The search firm will identify approximately 12-20 candidates for consideration by the City and the Public Utilities Board.


Candidates will be interviewed by two panels: one comprising technical and management professionals and another comprising community members. The recommended candidate from the panel interviews will then meet with City Manager John Russo and other City officials. AMP hopes to have a new GM in place by early summer. 

Power Box Art from page 1

sponsored by the following local businesses: Alameda Collision Repair, Alameda Natural Grocery, Berg Injury Lawyers, Rich and Rose Krinks (Broker and Associate Realtor, Harbor Bay Realty), The Marketplace, Mason Management, Ole's Waffle Shop, Rhythmix Cultural Works, Tot Tank and Tucker's Ice Cream. For more information, visit www.alamedamp.com/art. 

Discover Your Power at Alameda's Earth Day Festival

This year's festival will be bursting with booths, games and activities centered on simple steps for building a clean and sustainable world. Stop by AMP's booth and you can sign up for AMP's new My Energy online feature and get a FREE LED bulb. We'll also have fun activities for your kids! So, come out and show your support for the environment!

The City of Alameda's Earth Day Festival is on Saturday, April 26, from 10 a.m.-3 p.m. at Washington Park, 740 Central Ave. 



CLIP and KEEP!

Important AMP contact numbers:

Customer Service.....	748-3900
After Hours/Emergency.....	748-3902
TDD (hearing impaired).....	522-7538
Email.....	amp@alamedamp.com
Internet.....	www.alamedamp.com

The *FLASH* is published as a service to the customer-owners of Alameda Municipal Power. Readers are invited to submit ideas, suggestions, comments, or questions by writing to the editor at Alameda Municipal Power, P.O. Box H, Alameda, CA 94501-0263 or by email to irwin@alamedamp.com

PUBLIC UTILITIES BOARD

Madeline Deaton, President

Mary Sutter, Commissioner Ann McCormick, P.E., Commissioner

Gregory Hamm, Ph.D., P.E., Commissioner

John Russo, City Manager

ALAMEDA MUNICIPAL POWER

Ronald V. Stassi, Interim General Manager