



**ALAMEDA  
MUNICIPAL POWER**

A Department of the City of Alameda

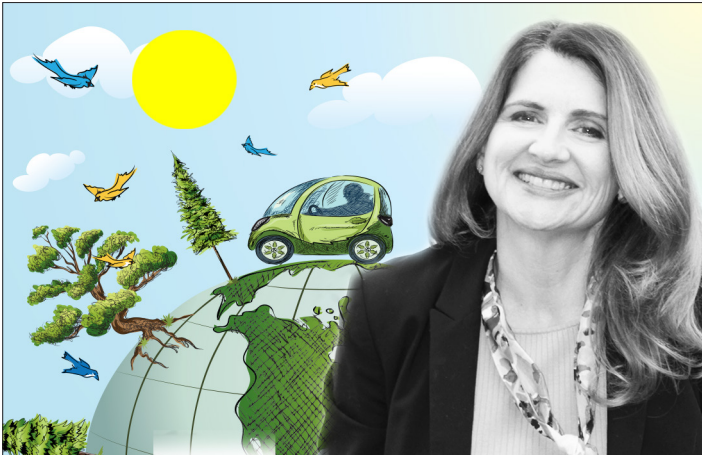
# The Flash

Volume 32 • Number 3 • March 2019

Connect with us at [www.alamedamp.com](http://www.alamedamp.com)



## PREPARING FOR ALAMEDA'S FUTURE ENERGY NEEDS



By Ann McCormick - President of the city of Alameda's Public Utilities Board

Back in 1887, a group of Alamedans who viewed electricity as an essential public service came together to create what would become the oldest public electric utility west of the Mississippi. Now, 132 years later, a new generation of Alamedans has come together to ensure that Alameda Municipal Power (AMP) meets the community's evolving energy needs.

Over the past year, I joined with residents, business leaders, developers, environmental advocates and AMP staff to build a strong framework for how our community-owned utility will serve our island in the future. This work was summarized in our long-term strategic plan, which was formally adopted by the Public Utilities Board in January.

### COLLABORATING ON COMMON GOALS

Through this collaborative effort, we formed common goals – to help protect our community from the effects of climate change, to maintain competitive energy rates, and to ensure that AMP continues to attract a talented workforce.

The recent news about PG&E's bankruptcy filing underscores the importance of a robust strategic plan to keep AMP financially stable in the rapidly changing energy industry.

### COMMITMENT TO THE ENVIRONMENT

A critical element of the new strategic plan is maintaining AMP's long commitment to the environment.

In the 1980s, AMP was one of the first utilities to invest heavily in renewable power through development of

geothermal resources. This was followed by years of investment in other clean energy sources including wind, landfill gas and hydropower.

### ZERO-CARBON ENERGY FOR ALAMEDA

I am very proud that our diligent planning over the last few decades will result in a zero-carbon energy supply for Alameda to serve our needs beginning in 2020 and throughout our future. AMP's commitment to maintaining zero-carbon energy resources is outlined in the strategic plan, and also aligns with the important goals outlined in the city of Alameda's Climate Action and Resiliency Plan.

### CLEAN-POWERED ELECTRIC VEHICLES

In addition to detailing goals related to our clean energy supply, the strategic plan also emphasizes how the utility's green programs can protect our environment.

With transportation contributing half of our community's greenhouse gas emissions, AMP will continue to offer incentives and create new programs to encourage electric car adoption. Alameda's electric vehicle owners can be especially proud that they are charging their cars with 100 percent carbon free power.

### MORE ENERGY EFFICIENCY

AMP also looks forward to efforts to make Alameda's buildings greener and more efficient. We will continue to offer home energy audits and numerous energy efficiency rebate programs, and will further develop incentive programs to encourage the reduction of natural gas use by switching to clean electric alternatives.

- continued on back

**2019 ALAMEDA  
EARTH DAY  
FESTIVAL**

APRIL 20  
WASHINGTON PARK  
10 a.m. - 3 p.m.

Pay AMP a visit to our booth at the Earth Day Festival.



# REQUEST A FREE HOME ENERGY CONSULTATION

Request a FREE home visit by an AMP energy specialist who will help you identify cost-effective actions that can save you energy and money.

## WHAT YOU'LL GET

In less than an hour, AMP's energy specialist will provide you with the following:

- A full inventory on how your home uses electricity
- Information on how to understand your electric bill
- A customized report with recommendations
- Plus, you'll get one free LED light bulb.

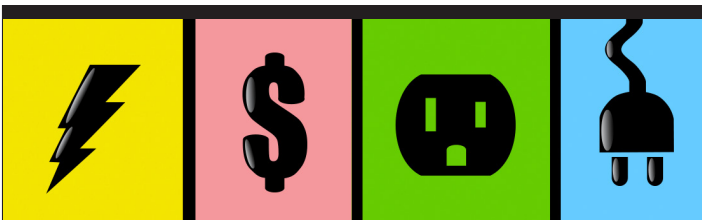
## IF YOU WANT TO GO SOLAR

If you're thinking about installing solar panels AMP recommends that you start with energy-saving upgrades.

Our energy specialist can recommend energy-saving improvements for your home ahead of your installation. Those improvements may allow you to purchase a smaller solar system and lower your installation costs, while also reducing the amount of energy you would still need to buy from AMP.

## MAKE AN APPOINTMENT NOW

Just call (510) 748-3900 to make an appointment for a free energy consultation.



## YOU'RE INVITED TO AMP'S ANNUAL BUDGET WORKSHOP

Your community-owned electric utility reflects the priorities of Alamedans, not shareholders. AMP's annual budget is developed through an open, public process, and your participation is always welcome.

## GET INVOLVED

PUBLIC UTILITIES BOARD ANNUAL BUDGET WORKSHOP  
 MONDAY, APRIL 15 AT 4 P.M.  
 AMP SERVICE CENTER  
 2000 GRAND ST. ALAMEDA, CA 94501

The Board's regular monthly meeting will follow at 7 p.m. at the same location.

- FUTURE - continued from front

## A SUSTAINABLE UTILITY WITH LOWER RATES THAN NEIGHBORING COMMUNITIES

As we map out AMP's environmental sustainability goals, we also understand that affordability and business sustainability must continue to be a high priority. AMP's rates currently average 17 percent below those in neighboring communities, and our utility remains financially strong.

Reflecting the values of our community, one of AMP's key business goals in the strategic plan is to keep Alameda's energy rates significantly lower than those in nearby cities.

## HIGHLY SKILLED WORKFORCE

As we plan AMP's strategic and business goals, we are mindful that attracting and retaining a highly skilled workforce is key to the utility's long-term success. Like many other companies in Alameda, AMP faces challenges with hiring and retaining employees due to the high cost of living in the Bay Area and the unique skillset required to run an electric utility.

The plan includes goals for maintaining a talented workforce in the years to come. As we develop a succession plan to prepare for upcoming retirements, we will also aim to increase the number of qualified applicants for key positions.

Learn more: [www.alamedamp.com/plan](http://www.alamedamp.com/plan)



## ELECTRICAL OUTLET SAFETY TIPS + + + +

Overloading an electrical outlet is a common cause of electrical problems.



Check all outlets to ensure they are cool to the touch and have protective faceplates.



Only plug one heat-producing appliance into an outlet at a time.



Do not use extension cords or multi-outlet converters for appliances.



Power strips only add outlets—they do not change the amount of power the outlet receives.



Use smart plugs to monitor outlet power loads.

## CONTACT AMP

Customer Service .....	510-748-3900
After Hours/Emergency.....	510-748-3900
TDD (hearing impaired) .....	510-522-7538
Email .....	<a href="mailto:amp@alamedamp.com">amp@alamedamp.com</a>
Website.....	<a href="http://www.alamedamp.com">www.alamedamp.com</a>

## PUBLIC UTILITIES BOARD

Ann McCormick, P.E., President, Laura Giuntini, Commissioner, Jerry Serventi, Commissioner, Jeff Gould, Commissioner, David Rudat Interim City Manager

## ALAMEDA MUNICIPAL POWER

Nicolas Procos, General Manager

The FLASH is published as a service to the customer-owners of Alameda Municipal Power. Readers are invited to submit ideas, suggestions, comments, or questions by writing to the editor at Alameda Municipal Power P.O. Box H, Alameda, CA 94501-0263 or by email to [haley@alamedamp.com](mailto:haley@alamedamp.com)

