



**ALAMEDA
MUNICIPAL POWER**

A Department of the City of Alameda

The Flash

Volume 30 • Number 3 • March 2017

Connect with us on   www.alamedamp.com

energy inView



INTRODUCING OUR NEW SMART-TECHNOLOGY PROGRAM

SERVING CUSTOMERS BETTER THAN EVER

We're excited to announce that Alameda Municipal Power (AMP) is launching a new smart-technology program called Energy inView. It begins with an upgrade of your existing meter to a smart meter, and includes new benefits.

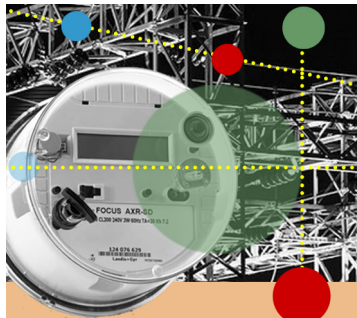
ENERGY SAVINGS AND CONVENIENCE

Smart meters will send your usage information wirelessly to AMP, which means AMP won't need to access your property each month. Not only is this more convenient, it's also greener! Fewer vehicle trips means fewer greenhouse-gas emissions in Alameda.

FASTER OUTAGE RESTORATION

The new meters will report outages via an electronic signal to AMP. That

means you won't need to call us, and we'll be able to restore power to your home more quickly! Plus, the upgraded meters and new enhancements come with no additional cost to you.



SMART METERS

POTENTIAL NEW RATE OPTIONS

The new technology will allow us to create potential new rate options that may benefit your wallet.

COMING SOON: MOBILE TOOLS!

We are developing new mobile options and account management tools that will allow you to pay your electric bill from any device anywhere and at anytime you choose.

You'll also be able to sign up for text alerts on how much energy you're using or when your bill is due. Plus, you'll have the option to track your energy use for every hour of the day!

INSTALLATION BEGINS IN APRIL

Starting in April 2017, AMP's meter-installation contractor, Professional Meters, Inc., will begin upgrading existing meters to smart meters. In advance of the scheduled meter exchange, you will receive a letter and brochure in the mail.

inView- continued on page 2



NICOLAS PROCOS

Nicolas (Nico) Procos was recently hired as AMP's new general manager. Procos replaces former AMP General Manager Glenn Steiger, who retired in August.

As the former manager of utilities administration for the Port of Oakland, Procos was responsible for all utility functions, including power procurement, renewable strategy and

rate making.

In a prior position, Procos represented the interests of the city of Palo Alto's utilities department before federal, state and regional regulators on critical legislative issues.

Procos, a Bay Area resident, has roots at AMP. From 2005 to 2007, he worked at AMP, focusing on

NEW GM- continued on page 2

TAKE ADVANTAGE OF OUR

\$100

REFRIGERATOR REBATE
BEFORE IT ENDS!

Apply before April 10 and get a \$100 rebate for replacing your old refrigerator or freezer for a new Energy Star refrigerator or freezer.

The rebate will be reduced to \$50 after April 10.

Find more about this AMP Online Rebate Program offer and other rebates at www.alamedamp.com/rebates.

IT'S YOUR UTILITY:
ATTEND THE ANNUAL BUDGET WORKSHOP



MONDAY



APRIL



17



4 PM

Your community-owned utility reflects the priorities of Alamedans, not shareholders. AMP's budget is developed through an open, public process. You can get involved by participating in the Public Utilities Board's annual budget workshop on Monday, April 17 at 4 p.m. at the AMP Service Center.

The Board's regular monthly meeting will follow at 7 p.m. For more information, go to www.alamedamp.com.

Energy inView - continued from page 1

We expect to complete installations throughout the island by December.

FIND OUT MORE

Find more information about AMP's smart-technology program at www.alamedamp.com/inview.

NEW GM - continued from page 1

regulatory issues, cost-of-service analysis, asset optimization and renewable energy credit sales. He holds a bachelor's degree from McGill University.

Elizabeth Warmerdam, who served as AMP's interim general manager from September 2016 to February 2017, continues in her role as an assistant city manager for the city of Alameda.

CONTACT AMP

Customer Service.....	510-748-3900
After Hours/Emergency.....	510-748-3902
TDD (hearing impaired).....	510-522-7538
Email	amp@alamedamp.com
Internet	www.alamedamp.com

The FLASH is published as a service to the customer-owners of Alameda Municipal Power. Readers are invited to submit ideas, suggestions, comments, or questions by writing to the editor at Alameda Municipal Power P.O. Box H, Alameda, CA 94501-0263 or by email to haley@alamedamp.com

PUBLIC UTILITIES BOARD

Madeline Deaton, Commissioner, Ann McCormick, P.E., Commissioner,
Laura Giuntini, Commissioner, Jerry Serventi, Commissioner, Jill Keimach, City Manager

ALAMEDA MUNICIPAL POWER
Nicolas Procos, General Manager



PUBLIC UTILITIES BOARD:
JERRY SERVENTI JOINS BOARD



NEW APPOINTMENT

Civil engineer and Alameda resident Jerry Serventi was recently appointed by Alameda Mayor Trish Spencer as the newest member of the Public Utilities Board. Serventi replaces former Board member Mary Sutter, who left the Board in December because she moved out of Alameda.

He retired as the director of engineering of the Port of Oakland after 30 years of service. Commissioner Serventi holds a bachelor's degree and a master's degree in Civil Engineering from the University of California, Berkeley.

**ALAMEDA
EARTH DAY
FESTIVAL**

SATURDAY APRIL 22
10 a.m. - 3 p.m. WASHINGTON PARK