



To: Honorable President and
Members of the Public Utilities Board

From: Nicolas Procos, General Manager

Re: General Manager's Report – January, 2021

PUB Highlights

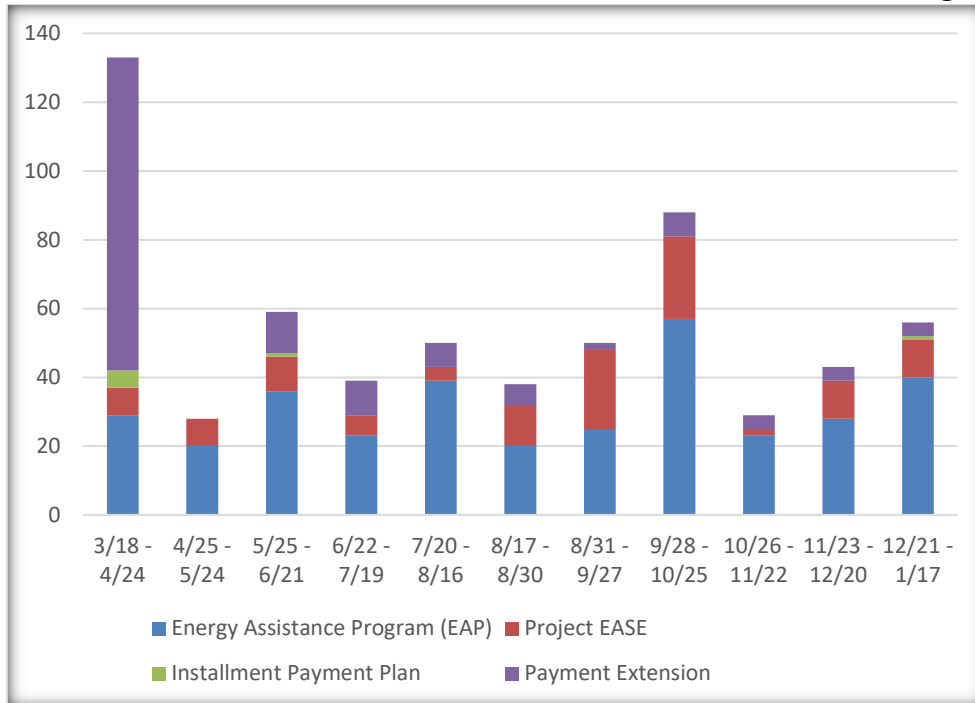
- **Economic Development Highlights—**
 - The new 4-story, 220k square foot Exelixis office building now under construction will feature an 800-kW solar system and 40 EV chargers.
 - Blue Rise Ventures at Marina Village is welcoming two new tenants at 1020 Atlantic Ave, one of which, Actym Therapeutics, will be conducting research to develop therapies and vaccines to treat or immunize against COVID-19.

- **Engineering and Operations Update –**
 - Transmission line work completed at Alameda Landing Waterfront. Two transmission poles were moved and upgraded from wood to steel to accommodate new development.
 - Alameda Municipal Power (AMP) has deployed new radios for field crews due to technology changes required by network operator (County of Alameda).

- **Outage –** On January 27, a significant storm event hit the Bay Area and resulted in outages to PG&E customers, including 36,000 in the Bay Area and some utilities called for mutual aid due to the number of outages. AMP had personnel on standby to deal with the storm and they addressed a number of smaller issues and only one larger outage caused by a large tree branch, affecting 48 customers for 3 hours.

- **Safety January 2021:**
 - 2021 Lost Time Cases: 1
 - 2021 Recordable Injuries: 1
 - 2021 First Aid Cases: 0
 - 2021 Vehicle Accidents/ Incidents: 0

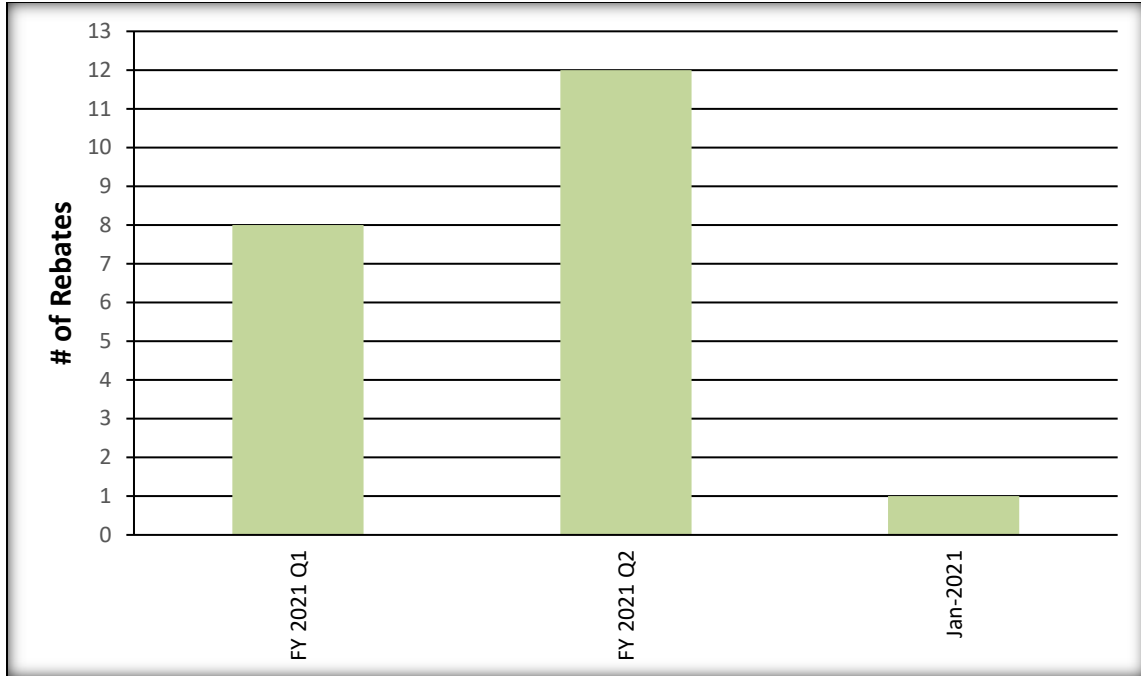
Number of New Customer Enrollments to AMP's Financial Assistance Programs



CUSTOMER PROGRAMS & EXPERIENCE

Table 1: Summary of Energy Efficiency Programs as of January 27, 2021

SUMMARY OF ENERGY EFFICIENCY PROGRAMS AS OF JANUARY 27, 2021						
Program	Annual Savings Target kWh/yr	1st Q	2nd Q	Jan-21	Cumulative Energy Savings kWh/yr	Percent of Annual Target
Residential Lighting	168,000	3,099	1,922	147	5,169	3.08%
Residential Other		8,043	7,711	3,624	19,378	
EAP+ (Low Income Residential)		34,734	34,673	0	69,407	
Energy Plus	457,555	0	207,129	0	207,129	45%
Non-Residential Lighting, Custom	89,024	11,094	299,805	0	310,899	349%
Non-Residential Customized, Other	87,532	0	0	0	0	0%
Non-Residential New Construction	20,888	0	0	0	0	0%
Non-Residential, Other		0	0	0	0	
TOTAL	823,000	56,970	551,240	3,771	611,982	74.4%



Residential Used Electric Vehicle Rebates

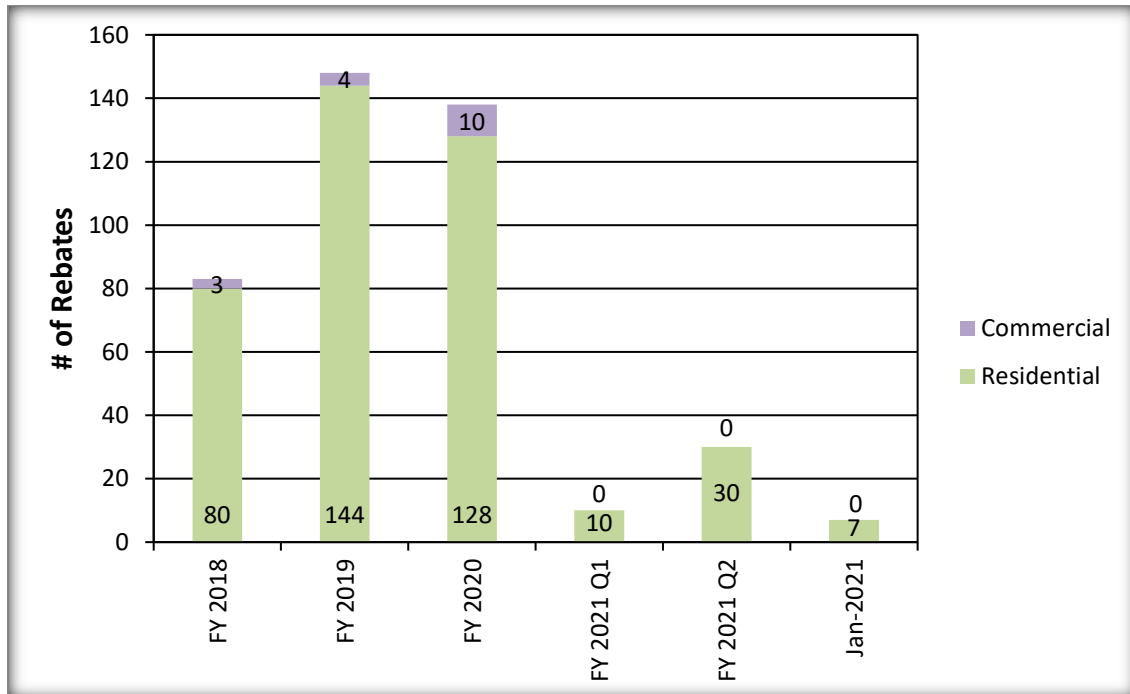


Figure 1: Electric Vehicle Charger Rebates

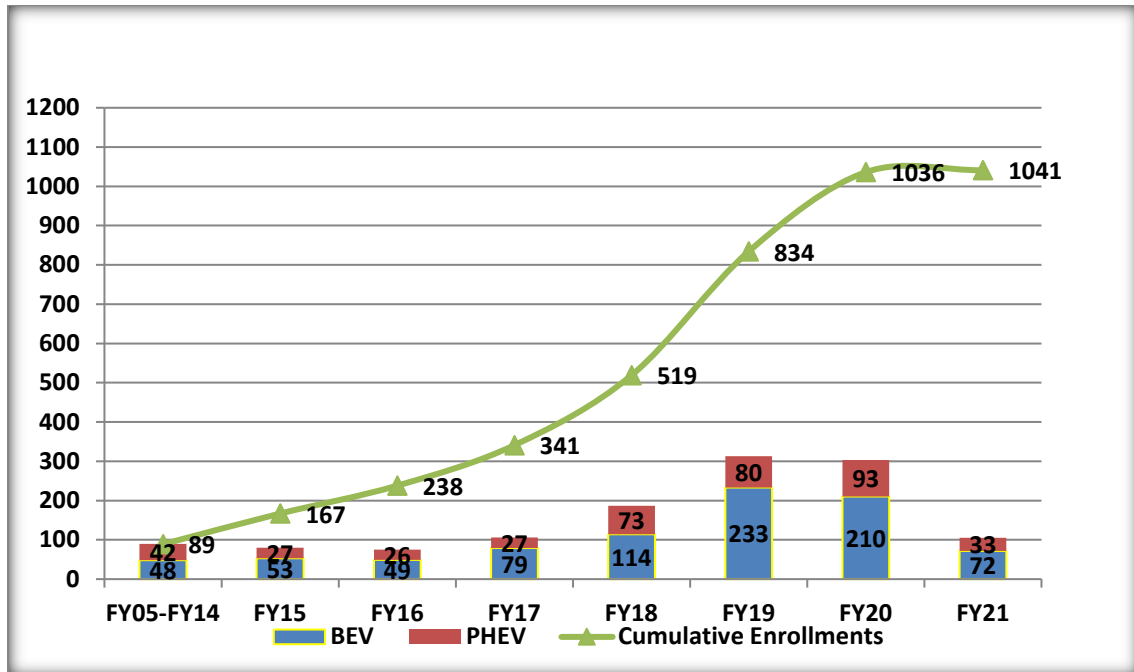


Figure 2: Electric Vehicle Discount Program Participation

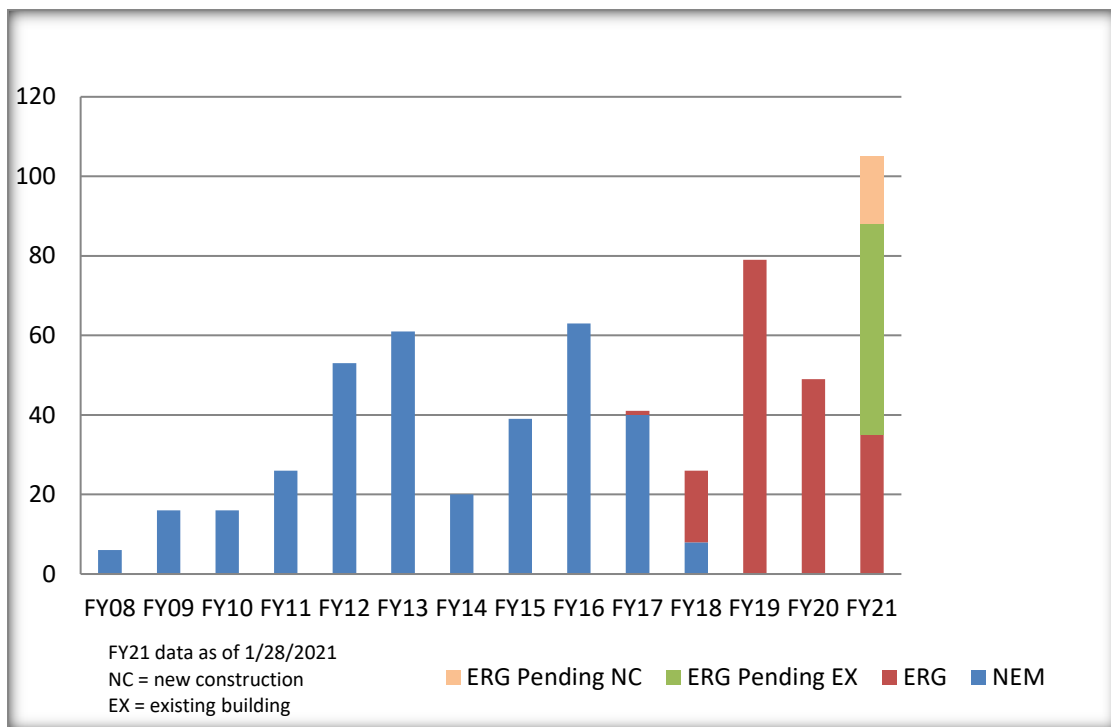


Figure 3: Residential Solar Interconnections

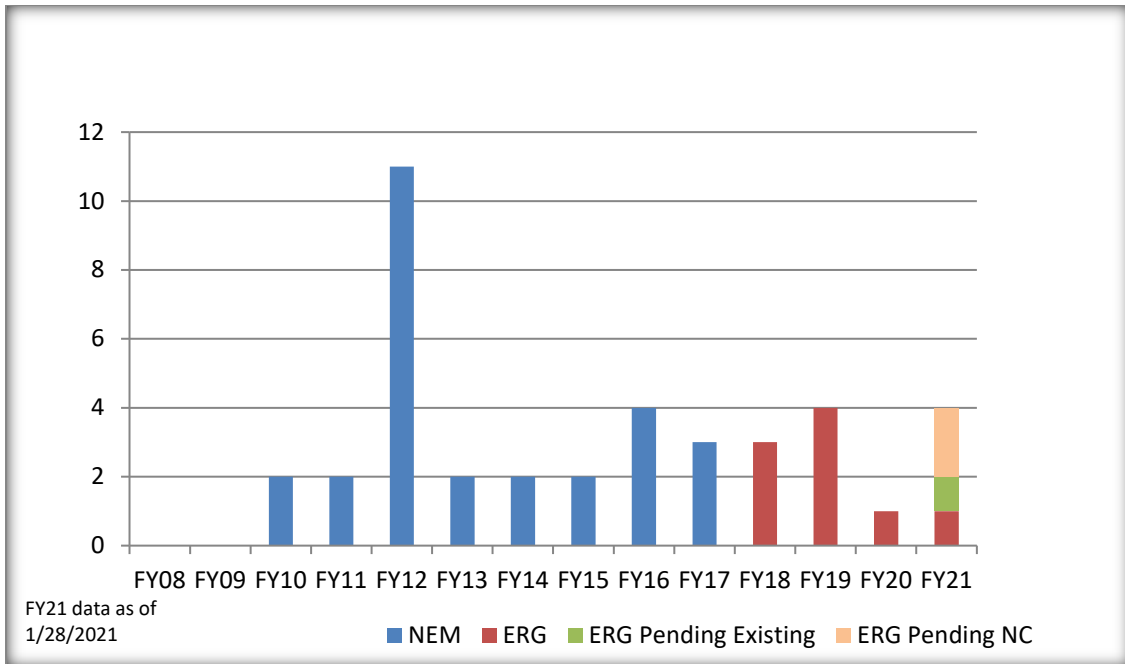


Figure 4: Commercial Solar Interconnections

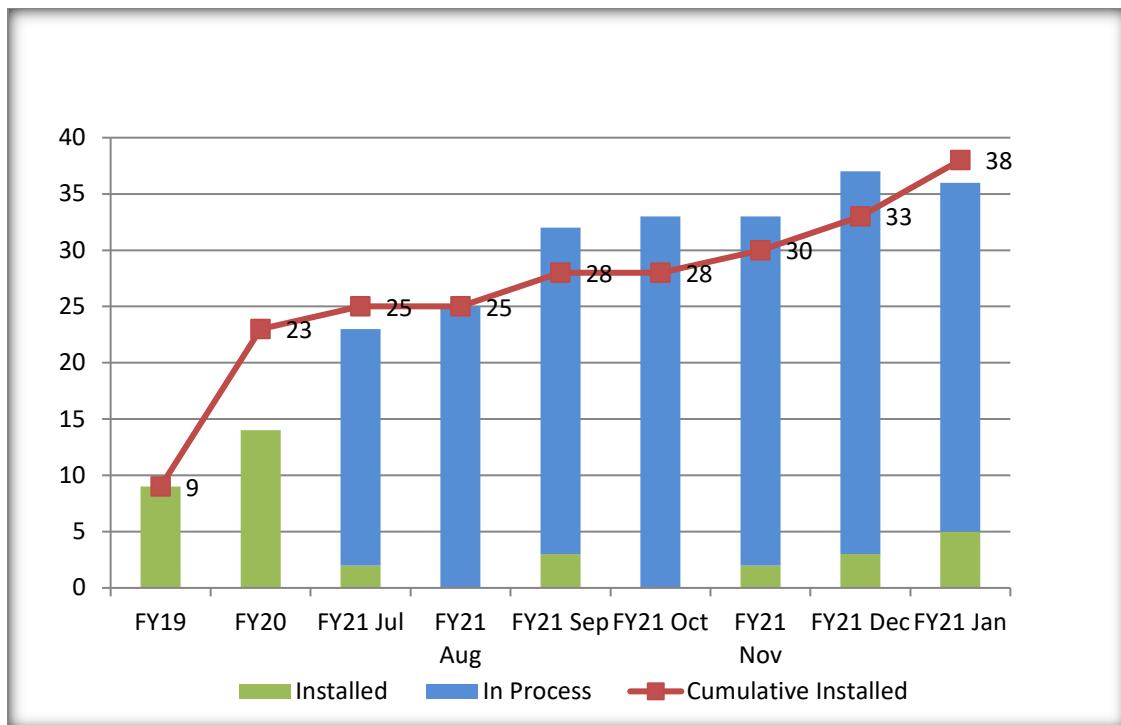


Figure 5: Battery Storage

FINANCIALS

**Table 2: Monthly and Year to Date Total Operating Revenue
 and Expense Report as of January 31, 2021**

<i>Report Status as of:</i>				
January 31, 2021	Monthly		Annual (FY) To Date	
	Goal	Result	Goal	Result
Total Operating Revenue - Electric (December 2020)	5,711,651	5,913,965	32,331,438	33,021,650
Total Operating Expense - Electric (December 2020)	5,530,696	4,943,043	29,763,596	24,242,968
Note: Shaded areas indicate the data is displayed on the accompanying graphs				

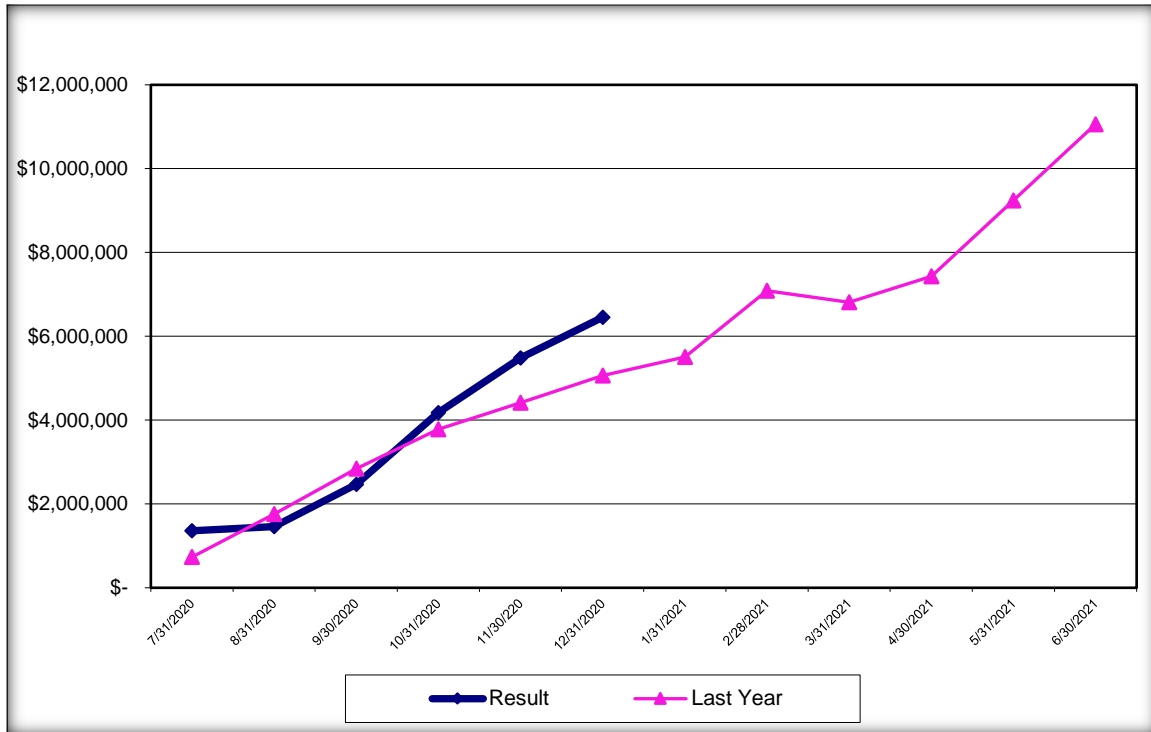


Figure 6: Fiscal Year 2021 Cumulative Net Income – Electric

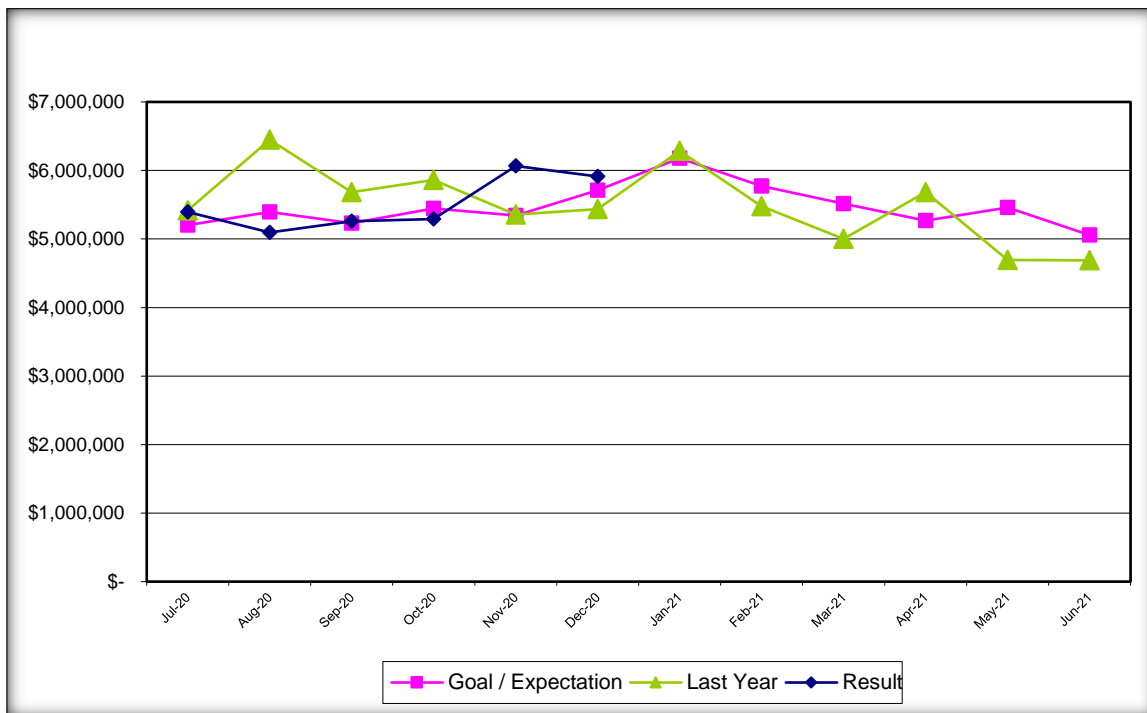


Figure 7: Fiscal Year 2021 Monthly Operating Revenue – Electric

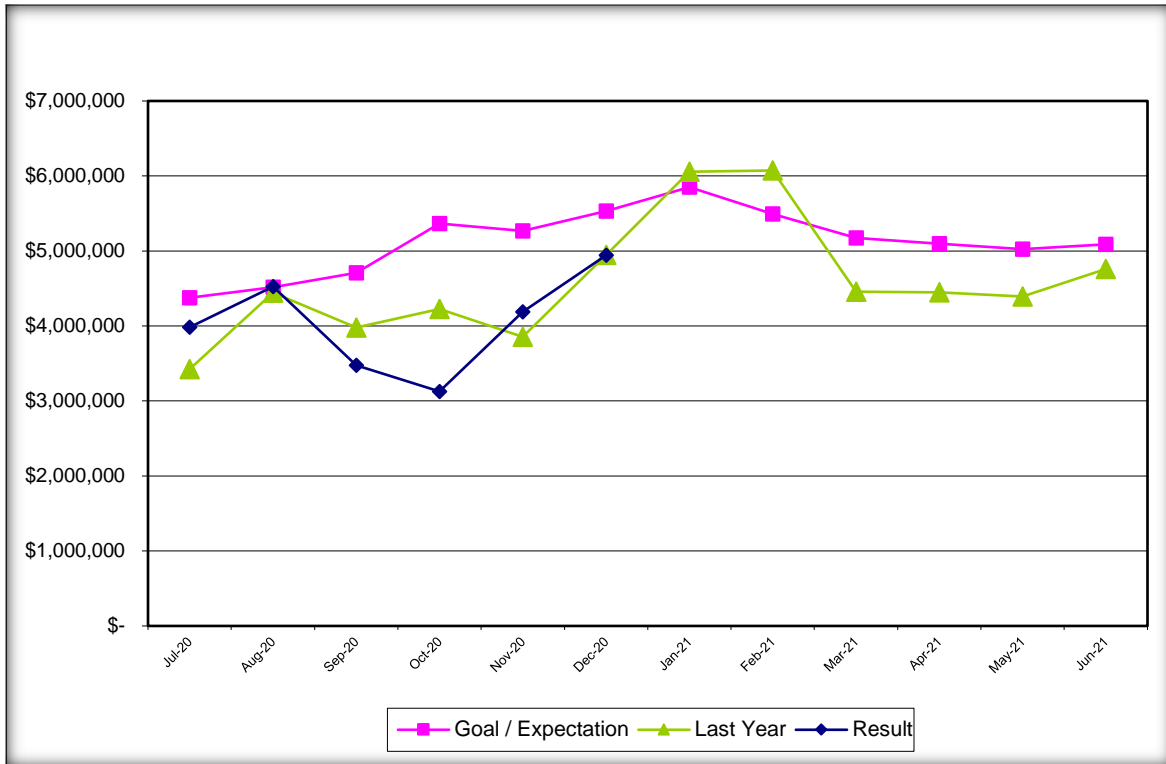


Figure 8: Fiscal Year 2021 Monthly Operating Expense – Electric

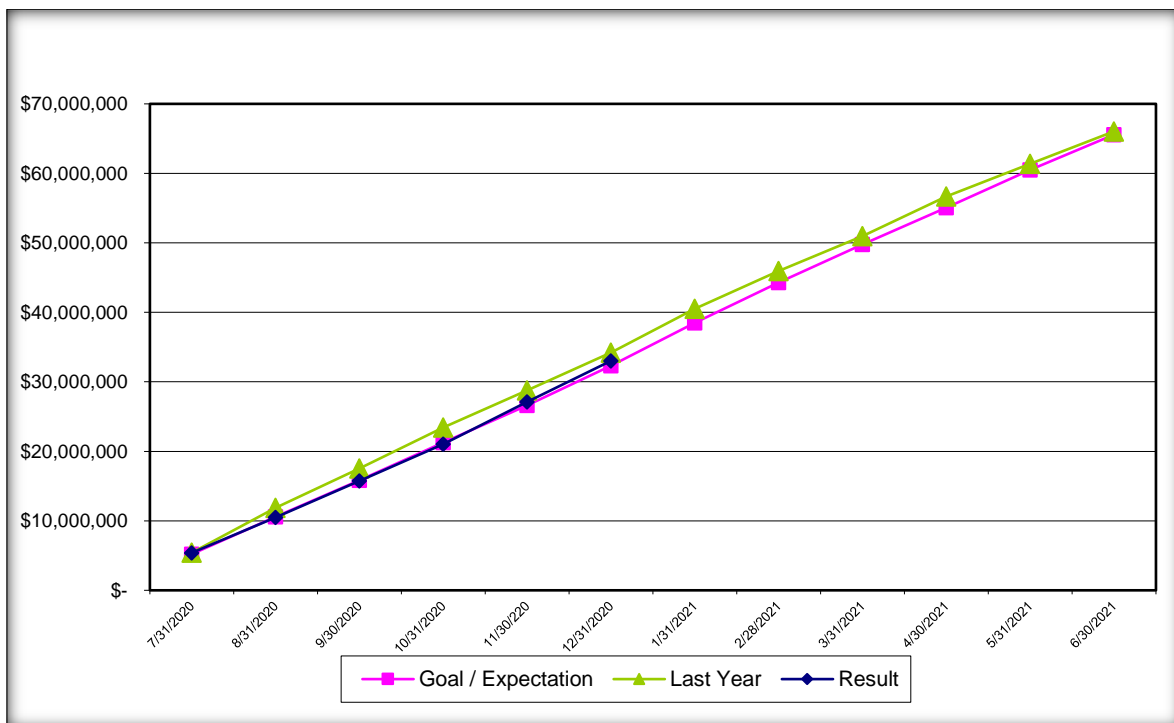


Figure 9: Fiscal Year 2021 Cumulative Operating Revenue – Electric

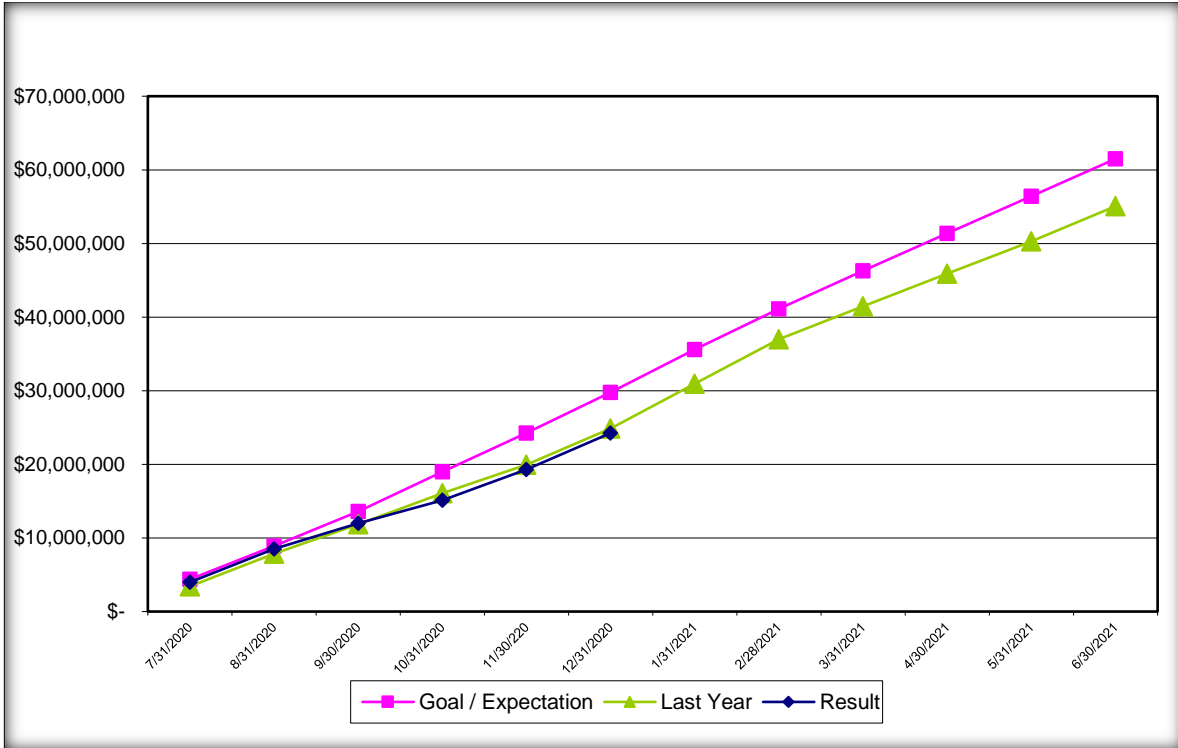


Figure 70: Fiscal Year 2021 Cumulative Operating Expense – Electric

Table 3: Special Revenue Summary – Fiscal Year 2021
Year-to-Date through December 2020

Cap & Trade Revenue Reserve - 10 2114	Funding from Cash Receipts	Power Costs	Operating Expenses	Capital Projects	Total Expenditures	Reserve Balance
Reserve Beginning Balance 6-30-2020						3,619,827
Jul-20	-	(204,167)	-	(118,630)	(322,797)	3,297,029
Aug-20	-	(204,167)	-	(78,888)	(283,055)	3,013,975
Sep-20	307,896	(131,667)	-	(43,536)	(175,203)	3,146,667
Oct-20	-	(131,667)	-	(317,838)	(449,505)	2,697,162
Nov-20	-	(131,667)	-	(5,761)	(137,428)	2,559,735
Dec-20	266,089	(131,667)	-	(4,790)	(136,457)	2,689,366
Jan-21					-	2,689,366
Feb-21					-	2,689,366
Mar-21					-	2,689,366
Apr-21					-	2,689,366
May-21					-	2,689,366
Jun-21					-	2,689,366
Total To Date	573,985	(935,002)	-	(569,443)	(1,504,445)	2,689,366

Renewable Energy Credits Revenue Reserve - 10 2113	Funding from Cash Receipts	Power Costs	Operating Expenses	Capital Projects	Total Expenditures	Reserve Balance
Reserve Beginning Balance 6-30-2020						19,821,572
Jul-20	-	-	-	-	-	19,821,572
Aug-20	-	(640)	(8,813)	-	(9,453)	19,812,119
Sep-20	-	-	(7,071)	-	(7,071)	19,805,048
Oct-20	-	(114,000)	(37,892)	-	(151,892)	19,653,156
Nov-20	-	(108,150)	(6,837)	-	(114,987)	19,538,169
Dec-20	-	(111,600)	(127,628)	-	(239,228)	19,298,941
Jan-21					-	19,298,941
Feb-21					-	19,298,941
Mar-21					-	19,298,941
Apr-21					-	19,298,941
May-21					-	19,298,941
Jun-21					-	19,298,941
Total To Date	-	(334,390)	(188,241)	-	(522,631)	19,298,941

Low Carbon Fuel Standard Revenue Reserve - 10 2115	Funding from Cash Receipts	Power Costs	Operating Expenses	Capital Projects	Total Expenditures	Reserve Balance
Reserve Beginning Balance 6-30-2020						1,737,572
Jul-20	-	-	(3,616)	-	(3,616)	1,733,956
Aug-20	-	-	(9,737)	-	(9,737)	1,724,219
Sep-20	-	-	(9,277)	-	(9,277)	1,714,942
Oct-20	-	-	(8,693)	-	(8,693)	1,706,249
Nov-20	-	-	(10,258)	-	(10,258)	1,695,991
Dec-20	-	-	(9,247)	-	(9,247)	1,686,743
Jan-21					-	1,686,743
Feb-21					-	1,686,743
Mar-21					-	1,686,743
Apr-21					-	1,686,743
May-21					-	1,686,743
Jun-21					-	1,686,743
Total To Date	-	-	(50,828)	-	(50,828)	1,686,743

Combined Total	573,985	(1,269,392)	(239,069)	(569,443)	(2,077,904)	23,675,051
-----------------------	----------------	--------------------	------------------	------------------	--------------------	-------------------

OPERATIONAL STATISTICS

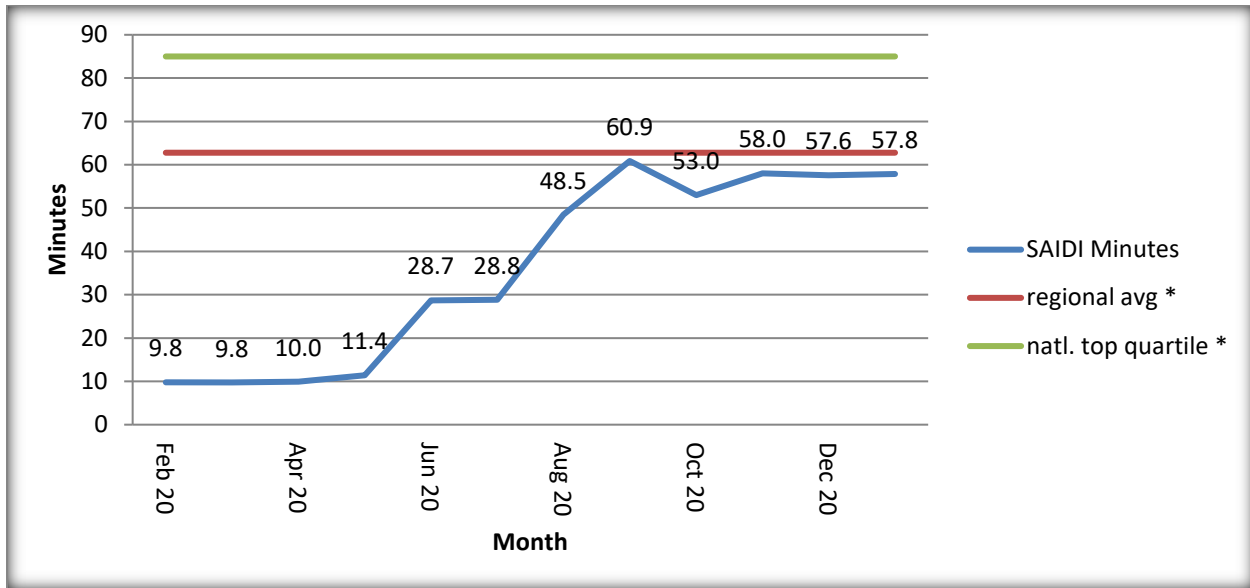


Figure 11: Rolling Twelve-Month System Average Interruption Duration Index (SAIDI)

*Based on Benchmark study of APPA Region 6

$$\text{SAIDI} = \frac{\text{Sum of customer-minutes off for all interruptions}}{\text{Total number of customers served}}$$

System Average Interruption Duration Index (SAIDI):

SAIDI is defined as the average duration of interruptions for customers served during a specified time period. Similar to CAIDI, but the number of customers served instead of affected is used. The unit is minutes. A common usage of SAIDI is "If all customers were without power the same amount of time, they would have been out for _____ minutes."

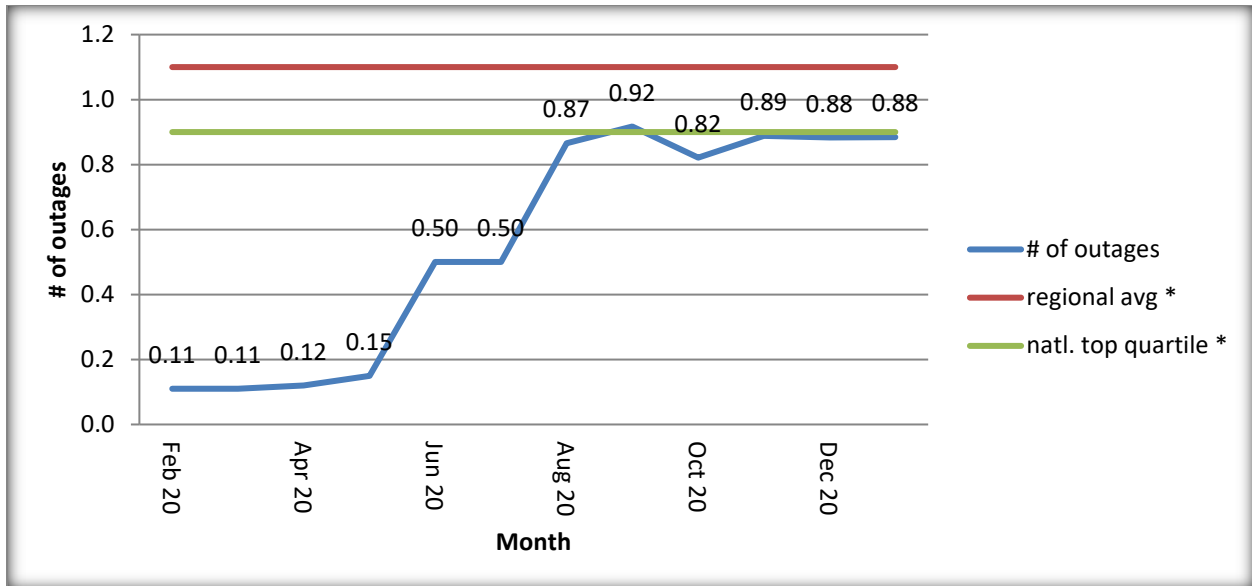


Figure 12: Rolling Twelve-Month System Average Interruption Frequency Index (SAIFI)

*Based on Benchmark study of Western Regional Utilities

$$\text{SAIFI} = \frac{\text{Total \# of customers affected by interruptions}}{\text{Total number of customers served}}$$

System Average Interruption Frequency Index (SAIFI):

SAIFI describes the average number of times a customer experiences a sustained interruption during a specified time period. The unit for SAIFI is 'interruptions per customer'. A common usage of SAIFI is "On average, customers experienced _____ interruptions".

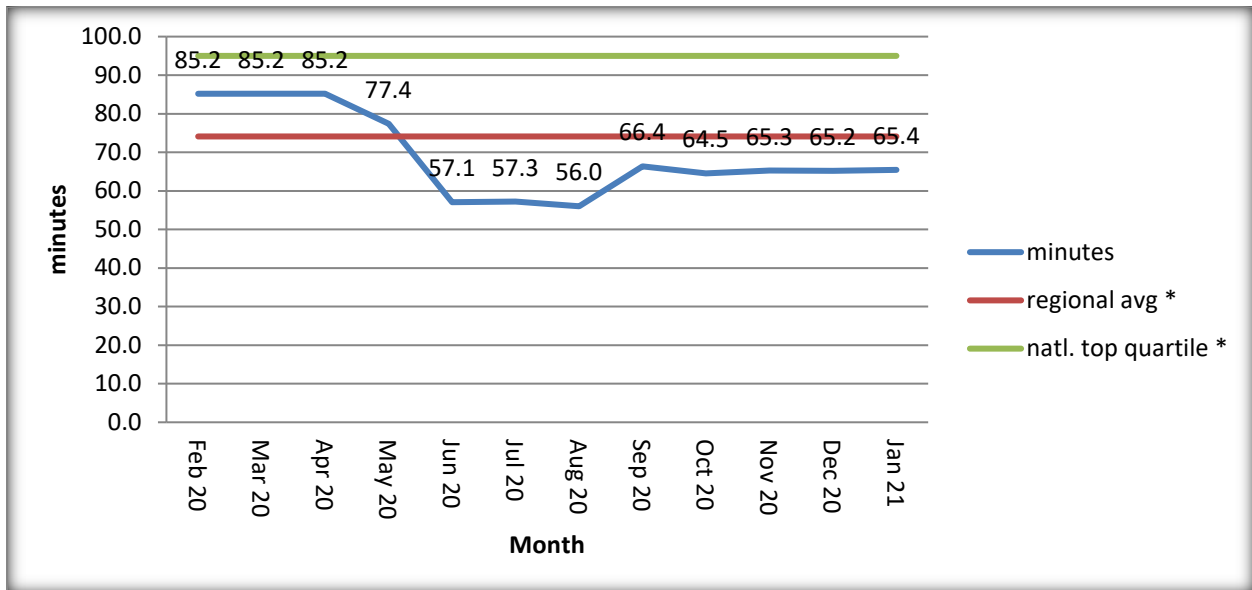


Figure 13: Rolling Twelve-Month Customer Average Interruption Duration Index (CAIDI)

*Based on Benchmark study of Western Regional Utilities

$$\text{CAIDI} = \frac{\text{Sum of customer-minutes off for all sustained interruptions}}{\text{Total \# of customers affected by the sustained interruptions}}$$

Customer Average Interruption Duration Index - CAIDI

CAIDI is the weighted average length of an interruption for customers affected during a specified time period. The unit of CAIDI is minutes. A common usage of CAIDI is "The average customer that experienced an outage is out for _____ minutes."

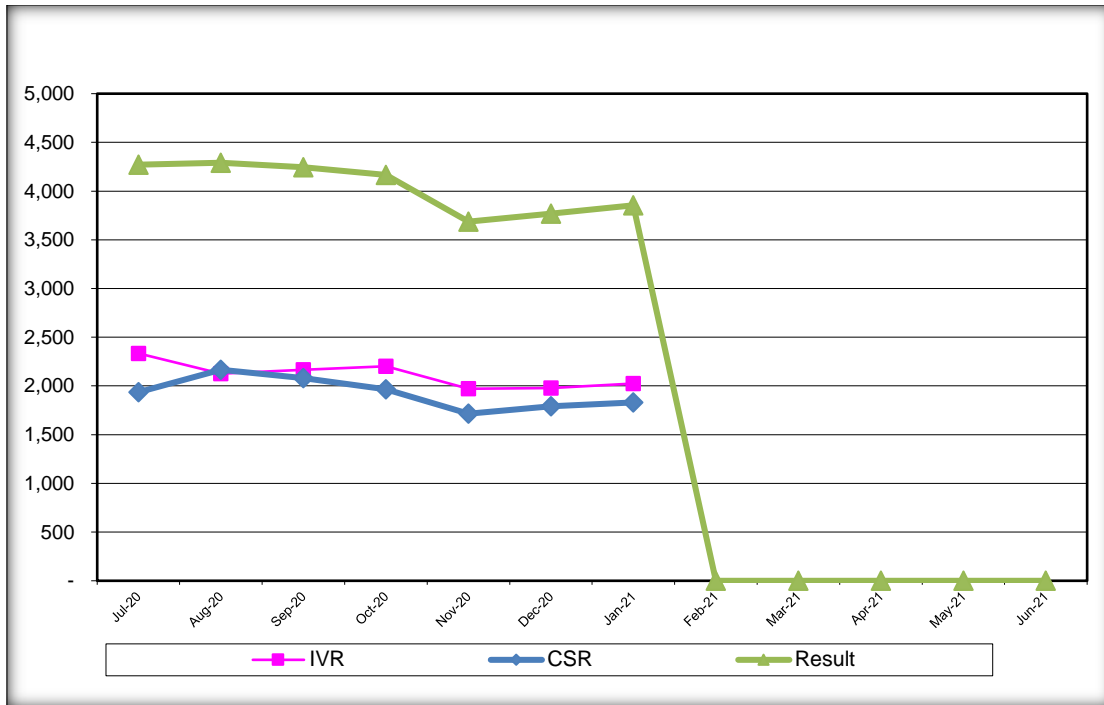


Figure 148: Fiscal Year 2021 Call Volume Through January 31, 2021